

Big W Sales



FIBERGLASS TANKS
FOR AGRICULTURE

BECAUSE THE NAME
ON YOUR TANK IS
JUST AS IMPORTANT
AS WHAT'S IN IT.



A large white fiberglass tank is the central focus of the image, set against a bright blue sky with scattered white clouds. The tank is cylindrical and has a small blue logo on its side. The background is a solid grey gradient that transitions from the top right to the bottom left, creating a modern, clean aesthetic.

WHY BUY A WORTHINGTON TANK?

Worthington Industries is a premier manufacturer of fiberglass tanks, with quality that is second to none. Building on the heritage of Palmer Mfg. & Tank, Inc., our experts work in dedicated, temperature-controlled buildings at a 200,000 sq. ft. facility in Garden City, KS.

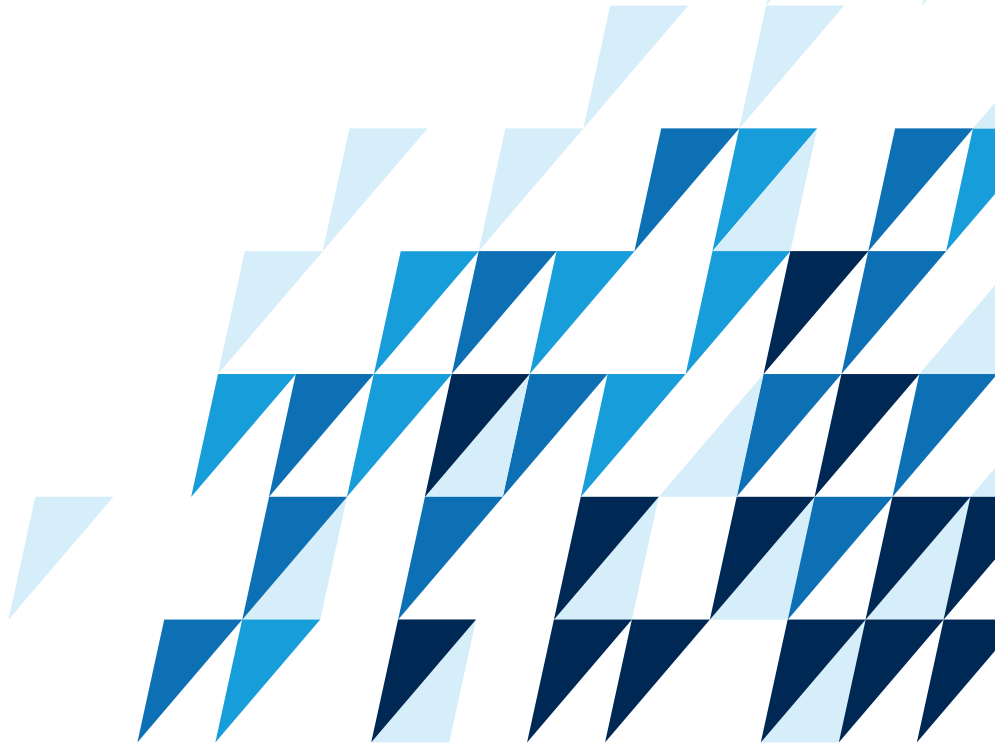
Our plant has been improving manufacturing techniques for more than 40 years, and our fiberglass tanks are among the highest quality available. Since 1972, we've delivered lightweight, durable storage solutions for a variety of demanding uses. Corrosion resistance can be customized for your specific application.

We offer a best-in-industry 5-year warranty for fiberglass tanks. The fact is, our tanks are so notably durable that they routinely last for decades, and we have dedicated personnel in place to respond promptly if or when service is needed.

Our fiberglass tanks are certified to API 12P 0009 specifications. In addition to this certification, we can build to:

- RTP-1
- ASTM 3299
- ASTM 4097

With our own fleet of delivery trucks, we can get our tanks to locations anywhere in the United States in a safe and timely manner.



AGRICULTURAL TANKS

WE'RE COMMITTED TO DELIVERING RELIABLE SOLUTIONS FOR LIQUID STORAGE OF FERTILIZERS, SALTS AND OTHER AGRICULTURAL CHEMICALS.

We offer an extensive list of available FRP resins to address your storage concerns. These resins include isophthalic, orthophthalic and vinyl ester. Through strong supply chain relationships, we can give resin selection guidance and tailor our offering to your exact needs.

By incorporating the most modern, automated process of filament winding, we ensure that our fiberglass tanks are properly fabricated for durability and built to the highest quality standards.

We also manufacture steel tanks, including pressure vessels of all sizes for a number of industrial applications. Please contact us for more information about our steel tanks.



VERTICAL FLAT BOTTOM TANKS

Vertical fiberglass tanks can be fabricated as open, dished, domed or conical top and have the ability to be fitted with an internal sloped bottom as needed.

COMMON DIAMETERS ARE 6, 8, 9, 10 AND 12 FEET, WITH OTHER SIZES ALSO AVAILABLE.



Diameter	6 FT		8 FT		9 FT		10 FT		12 FT		
	Side Wall	CAP	WT	CAP	WT	CAP	WT	CAP	WT	CAP	WT
5 Feet		1058	764	1880	1127	2379	1550	2938	1785	4230	2067
6 Feet		1269	783	2256	1152	2855	1579	3525	1817	5076	2105
7 Feet		1481	802	2632	1178	3331	1607	4113	1848	5922	2142
8 Feet		1692	820	3008	1203	3807	1635	4700	1880	6768	2180
9 Feet		1904	839	3384	1228	4283	1663	5288	1911	7614	2218
10 Feet		2115	858	3760	1253	4759	1692	5875	1942	8460	2256
11 Feet		2327	877	4136	1379	5235	1720	6463	1974	9306	2293
12 Feet		2538	896	4512	1404	5711	1748	7050	2005	10152	2331
13 Feet		2750	971	4888	1429	6187	1777	7638	2037	10998	2369
14 Feet		2961	990	5264	1454	6662	1805	8225	2068	11844	2406
15 Feet		3173	1009	5640	1479	7138	1833	8813	2100	12690	2444
16 Feet		3384	1028	6016	1504	7614	1861	9400	2131	13536	2482
17 Feet		3596	1047	6392	1529	8090	1890	9988	2162	14383	2519
18 Feet		3807	1065	6768	1555	8566	1918	10575	2194	15229	2557
19 Feet		4019	1084	7144	1580	9042	1946	11163	2225	16075	2595
20 Feet		4230	1103	7520	1605	9518	1974	11750	2257	16921	2633
22 Feet		N/A	N/A	N/A	N/A	N/A	N/A	N/A	N/A	18613	2708
24 Feet		N/A	N/A	N/A	N/A	N/A	N/A	N/A	N/A	20305	2783

Custom sizes available up to 42' in height.

*Tank weight is estimated above. Exact weight depends on several factors such as size, contents, design and manufacturing variables. Fiberglass tank information only. Please contact us for steel tank specifications.

VERTICAL LEG TANKS

Vertical leg tanks are manufactured with an open top or enclosed with a dished, domed or conical top. They can be fitted with dome bottoms with a 30-inch clearance, or a cone bottom. Smaller units are fabricated with angle iron legs, while larger units are made with I-beam legs for more robust support.

AVAILABLE IN 6, 8, 10 AND 12 FEET DIAMETER



Diameter	6 FT		8 FT		8 FT		10 FT		12 FT		12 FT	
	60° Cone		45° Cone		60° Cone		40° Cone		50° Cone		60° Cone	
	Side Wall	CAP	WT	CAP	WT	CAP	WT	CAP	WT	CAP	WT	CAP
5 Feet	1411	1264	2382	1477	2748	1677	3764	2945	6175	3343	7160	3843
6 Feet	1622	1283	2758	1502	3124	1702	4351	2977	7021	3381	8006	3881
7 Feet	1834	1302	3134	1528	3500	1728	4939	3008	7867	3419	8852	3919
8 Feet	2045	1320	3510	1553	3876	1753	5526	3040	8713	3456	9698	3956
9 Feet	2257	1339	3886	1578	4252	1778	6114	3071	9559	3494	10544	3994
10 Feet	2468	1358	4262	1603	4628	1803	6701	3102	10405	3532	11390	4032
11 Feet	2680	1377	4638	1879	5004	2079	7289	3134	11251	3569	12236	4069
12 Feet	2891	1396	5014	1904	5380	2104	7876	3165	12097	3607	13082	4107
13 Feet	3103	1621	5390	1929	5756	2129	8464	3197	12943	3645	13928	4145
14 Feet	3314	1640	5766	1954	6132	2154	9051	3228	13789	3683	14774	4183
15 Feet	3526	1659	6142	1979	6508	2179	9639	3260	14635	3720	15620	4220
16 Feet	3737	1678	6518	2004	6884	2204	10226	3291	15481	3758	16466	4258
17 Feet	3949	1697	6894	2029	7260	2229	10814	3322	16328	3796	17313	4296
18 Feet	4160	1715	7270	2055	7636	2255	11401	3354	17174	3833	18159	4333
19 Feet	4372	1734	7646	2080	8012	2280	11989	3385	18020	3871	19005	4371
20 Feet	4583	1753	8022	2105	8388	2305	12576	3417	18866	3909	19851	4409
22 Feet	N/A	N/A	N/A	N/A	N/A	N/A	N/A	N/A	20558	3984	21543	4484
24 Feet	N/A	N/A	N/A	N/A	N/A	N/A	N/A	N/A	22250	4060	23235	4560

*Tank weight is estimated above. Exact weight depends on several factors such as size, contents, design and manufacturing variables. Fiberglass tank information only. Please contact us for steel tank specifications.

HORIZONTAL TANKS

Above-ground and underground horizontal tanks are manufactured with dished or domed ends for better distribution of weight and added strength. These tanks can be mounted on carbon steel, concrete or our standard polyurethane foam-filled fiberglass cradles glassed to the tank.

THESE TANKS ARE MOST OFTEN OFFERED IN 8, 10 AND 12 FEET DIAMETERS.



Diameter	8 Feet		10 Feet		12 Feet		
	Side Wall	CAP	WT	CAP	WT	CAP	WT
5 Feet		2630	1138	4038	1657	5790	2040
6 Feet		3006	1163	4625	1688	6636	2078
7 Feet		3382	1188	5213	1720	7482	2116
8 Feet		3758	1213	5800	1751	8328	2154
9 Feet		4134	1238	6388	1783	9174	2191
10 Feet		4510	1263	6975	1814	10020	2229
11 Feet		4886	1288	7563	1846	10866	2267
12 Feet		5262	1314	8150	1877	11712	2304
13 Feet		5638	1339	8738	1908	12558	2342
14 Feet		6014	1364	9325	1940	13404	2380
15 Feet		6390	1389	9913	1971	14250	2417
16 Feet		6766	1414	10500	2003	15096	2455
17 Feet		7142	1439	11088	2034	15943	2493
18 Feet		7518	1464	11675	2065	16789	2531
19 Feet		7894	1490	12263	2097	17635	2568
20 Feet		8270	1515	12850	2128	18481	2606
22 Feet		N/A	N/A	N/A	N/A	20173	2681
24 Feet		N/A	N/A	N/A	N/A	21865	2757

*Tank weight is estimated above. Exact weight depends on several factors such as size, contents, design and manufacturing variables. Fiberglass tank information only. Please contact us for steel tank specifications.

OUR MANUFACTURING PROCESS

Worthington Industries makes fiberglass tanks utilizing a modern, automated filament winding technique. We incorporate Owens Corning's state-of-the-art Advantex® glass for outstanding durability. We meticulously maintain high quality standards, and every tank is tested to ensure a proper degree of cure.

We specialize in meeting customer demands by offering numerous tank sizes and types of resins, along with different types of finishes and corrosion-resistance levels to ensure our tanks are built to your specifications and application need.

FOUR LAYERS OF PROTECTION

Construction of our fiberglass tanks starts with a 10 mil resin-rich surface mat formulated for complete chemical resistance and to prevent weeping and interior surface breakdown. An 80-90 mil layer of chopped fiberglass follows, which adds extra thickness and toughens the corrosion barrier.

The next layer is the actual structure of the tank. Resin is applied with continuous strands of fiberglass reinforcement designed for optimum strength. A final UV-protected resin layer is applied to give the tanks an attractive, maintenance-free surface.

ADDITIONAL STORAGE SOLUTIONS

In addition to our fiberglass storage tanks, our product offering includes high-quality custom steel and stainless steel tanks and pressure vessels in a variety of sizes.



Big W Sales

FOR MORE INFORMATION CONTACT:

STOCKTON, CA 800-922-7253

FRESNO, CA 800-532-0253

SALINAS, CA 844-755-2410

YUMA, AZ 800-752-2636

bigwsales.com



WORTHINGTON
INDUSTRIES